



2015 UNITED STATES ROTAX MAX CHALLENGE

BULLETIN 2015-7

IMPLEMENTATION: August 3rd 2015

Modified regulations: - **2015 UNITED STATES ROTAX MAX TECHNICAL REGULATIONS**

This bulletin modifies the above regulations.

A) Section 6.5 Exhaust valve (125 MAX and 125 MAX DD2).

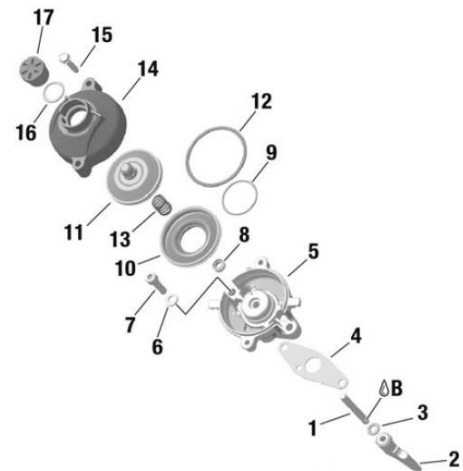
Has been modified by the addition of the following:

Version 1, pneumatic timed exhaust valve.



Version 2, electronic timed exhaust valve

(Crankcase vacuum used to close exhaust valve
Spring (13) below the exhaust valve piston (11))

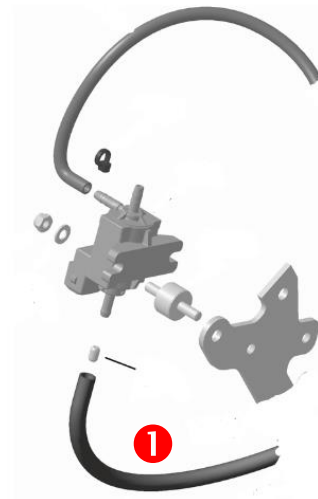
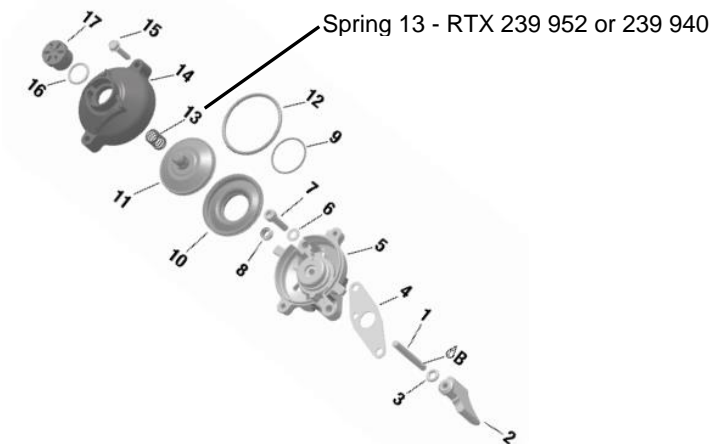


At the electronic times exhaust valve also the version using the positive pressure in crankcase to close the exhaust valve is legal to be used.

Version 2, electronic timed exhaust valve

(crankcase positive pressure used to close exhaust valve)

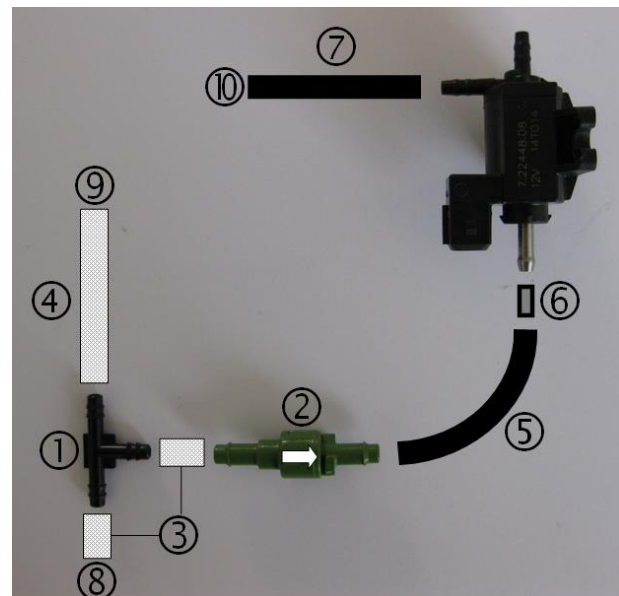
Spring (13) outside the exhaust valve piston (11).



To fit the impulse nozzle ❶ (part RTX 956 305) into the pressure hose is optional.
The direction of the impulse nozzle inside the pressure hose is free.

Parts description and connections

- ❶ T-Fitting, RTX 660 550
- ❷ One way valve RTX 660 543, supplied with the engine/ EVO upgrade kit.
- ❸ 2 x fuel hose, length = 25 mm, use fuel hose supplied with the engine.
- ❹ Fuel hose 400 mm length, use fuel hose supplied with the engine.
- ❺ Pressure hose RTX 201 576 black, length = 420 mm)
- ❻ Impulse nozzle 956 305
- ❼ Pressure hose 660 575 (black, length = 220 mm) use pressure hose supplied with the engine/ EVO upgrade kit.
- ❽ To be connected to impulse connection of fuel pump.
- ❾ To be connected to impulse connection of crank case.
- ❿ To be connected to impulse connection of exhaust valve housing.



Measurements of hoses identified as items number 3, 4, 5 and 7 have a tolerance of +/- 5 mm.

The modifications in this bulletin will be integrated in the US Rotax MAX Challenge Technical Regulation 2015 as of August 3rd. The version dated August 3rd 2015 will replace the version dated March 16th 2015.